

# Portstewart



**meafee**

# Conditions of Sale

1. The highest approved bidder shall be the purchaser. The Auctioneer reserves the right to refuse any bid, and should any dispute arise between two or more bidders, the lot or lots in dispute shall be put up again, or not, and resold at the discretion of the Auctioneer, or the auctioneer may declare the purchaser. The Auctioneer reserves the right to bid on behalf of the vendor up to and including any reserve price placed on any lot and to alter, divide, group or withdraw any lot or lots either before or at any time during the sale.
2. The Auctioneer shall regulate the bidding and no bid shall be retracted.
3. Every purchaser shall give his name and place of abode, in default of which the Auctioneers shall have the power to resell at once, or afterwards as they may think fit.
4. Each bidder shall be supposed to have seen and to be thoroughly acquainted with the contents and conditions of the lot or lots on which he may bid, and no allowance whatsoever will be made for any faults, imperfections or errors of any description. The measurements and quantities described in the Catalogue are believed to be correct and must be taken as such. The purchaser being held to have satisfied himself as to measurements and quantities and other specifications in the Catalogue before bidding, neither will the Auctioneers or the Vendors be responsible for any lot or parts of any lot after the fall of the hammer, from which time all lots purchased are at the risk of the Purchaser.
5. The Auctioneers or the Vendors do not guarantee the measurements catalogued, or the correct description, genuineness or authenticity of any lot.
6. Each purchaser shall pay the whole amount of his purchase money (Auctioneer's Commission payable by purchaser) for all lots bought by him before any lot or lots can be removed and the whole amount due from each purchaser must be absolutely paid on each day of the sale and if not paid within such time, all moneys deposited in any part payment shall be absolutely forfeited and the Auctioneers will be at liberty to resell the lot or lots or any parts thereof remaining un-removed, by Public Sale or otherwise, without giving previous notice to the purchaser and any difference or deficiencies which may arise from, such re-sale, together with all expenses attending the same shall be made good by the purchaser.
7. The lots are sold with all faults and errors of description. No allowance can be made in any case, nor will the Vendors be answerable for any deficiencies in quantities or measurements when the purchaser, his agent, carrier or man employed by him has removed any part of his lot or lots from the premises. All lots purchased must be removed absolutely in the time specified and if not so removed may be resold by the Vendors.
8. The Purchaser shall be answerable for all damages occasioned by any injury or other lots, by the removal of lots purchased by them, or to the premises and to repair or pay damages to the owners of same before the removal of their lots from the premises. In the event of any persons interested in the premises, claiming the whole or any part of a lot before its removal therefrom or if in the Auctioneer's opinion, the removal of any lot will endanger or permanently damage any building, the Auctioneer may, by written notice to the purchaser of such lot delivered to him or his Agent, or sent by post to his abode or place of business last known to the Auctioneers, rescind the sale of any such lot. The purchaser shall then be repaid his purchase money but shall not have or make any other claim.
9. Such lot or lots as are not cleared away agreeably to the condition of this sale, will not only be forfeited and may be dealt with under last condition, but the purchaser shall pay every expense attending the removal of any such lot or lots, and the costs of making good any damage occasioned by such removal. No lots shall be removed until the day following the last day of sale.
10. If any dispute or difference arises about any lot, or any other subject, the same shall be settled by the Auctioneers, with the approval of the Vendors, whose determination shall be final and binding on all parties concerned.
11. The Auctioneers nor the Vendors do not accept any liability for personal injuries of any description sustained or caused by any reason whatsoever by any person while on the premises or otherwise.
12. Purchasers will pay 15% Auctioneers Commission (minimum fee £1) + VAT on the commission.





# Portstewart

Interesting Clearance Sale by Auction of

## **Antique & General Furnishings & Effects**



34 Mill Road, Portstewart

**Thursday 12th January @ 7.00pm**

Viewing on the Premises: Tuesday 10th & Wednesday 11th January 3.00 – 5.00pm and  
7.00– 8.30pm and day of sale from 3.30pm - 6.45pm

**NB: Sale to be conducted by catalogue and screen in  
Portstewart Presbyterian Church, Central Avenue, Portstewart**

Telephone Number During Viewing & Sale  
0786 0474 956 or 0774 9849 455

## Kitchen / Dinette

- 1 A Sundry Lot on Top Shelf of Corner Cupboard
- 2 A Four Piece Tea Service and Two Condiments
- 3 A Sundry Lot of Silver Plate and Glass and a Four Piece Utensil Set
- 4 A Sundry Lot of Glasses
- 5 A Myott & Sons Tea Set
- 6 A Baking Bowl, Another and Two Jugs
- 7 A Sundry Lot, Ceramic Kettle, Utensils etc
- 8 Two Good Saucepans, Tea Pots etc
- 9 A Lot of Pyrex Bowls and Jugs
- 10 Three Storage Jars
- 11 A Large Picquot Tea Service on Tray
- 12 A Villeroy and Boch Dinner and Tea Set
- 13 A Lot of Four Whiskey Jugs
- 14 A New Philips Liquidizer
- 15 A Microwave
- 16 An Enamel Bread Bin and a 'Duck' Storage Jar
- 17 A Sharp Microwave
- 18 A Lot of Trays and a Sponge Bowl
- 19 A Large Sundry Lot in Cupboard
- 20 A Large Sundry Lot in Cupboard
- 21 A Large Sundry Lot in Glazed Cupboard
- 22 An Oak Chiming Clock and the Contents of the Top of the Kitchen Units
- 23 A Brown Ceramic Tea and Mug Set
- 24 Two Part Tea Sets
- 25 A Gilted Trolley and Contents
- 26 Two Drawers of Saucepans, Pans etc
- 27 Two Drawers of Cutlery, Utensils etc
- 28 A Ceramic Teapot, Letter Opener etc
- 29 A Pair of Pottery Dogs
- 30 A Nice Mirror Backed Hallstand
- 31 A Skelton Clock Under Dome
- 32 A Set of Six Glass Tumblers
- 33 An Enamel Milk Can
- 34 A Staffordshire Over Pot
- 35 A Set of Field Glasses in Case
- 36 An Unusual Manson Ironstone Jug and a 'Fortum and Mason' Jar
- 37 A Small Watercolour 'Bird in Bird Box' – E Holmes, and its Stand
- 38 A Sundry Lot of Four Pictures, Two Bottles, a Wall Plaque and an Oval Plate
- 39 A Sundry Lot on Three Shelves
- 40 A Pine Shelved Wall Rack
- 41 A Pine Wine Holder and Cupboard
- 42 A Teak Ladder Back Chair
- 43 A Royal Doulton 'Lambeth Ware' Dinner and Tea Set

- 44 Two Sets of Designer Wine Glasses
- 45 A Mahogany Tea Trolley

## Sun Lounge

- 46 A Lot of Good Hardback Books
- 47 A Sundry Lot on Window Shelf, Ceramic Basket etc
- 48 A Sundry Lot on Window Shelf, Table Lamp etc
- 49 An Oak Occasional Table
- 50 A Pair of Cane Armchairs and a Matching Glass Topped Coffee Table
- 51 A Two Seater Ratan Settee and Matching Armchair
- 52 A Tiled Top Metal Based Circular Table
- 53 A Sundry Lot on Top of Table
- 54 An English Pottery Water Jug and a Circular Bowl and its Contents
- 55 A Small Brass Table Lamp and Shade
- 56 Three Pottery Floor Balls
- 57 A Cane Trug and a Garden 'Angel' Wall Weath
- 58 A Circular Mahogany Wine Table

## Living Room

- 59 An Inlaid Chair, Tapestry Seat
- 60 An Oak Book Trough
- 61 A Parker Knoll Armchair
- 62 A Framed Tapestry
- 63 A Toshiba Television, Video Player, CD Player and Tapes, and its Television Stand
- 64 A Mahogany Framed Tapestry Firescreen
- 65 A Gilt Framed 'Cherub' Mirror
- 66 A Lot of Ceramic Candleholders and a Modern Mantle Clock
- 67 A Tyrone Crystal Candleholder
- 68 A Pair of Brass Candlesticks
- 69 A Lot of Two Swarovski Figurines
- 70 A Very Fine Mahogany Carved Centre Table
- 71 A Large Pottery Table Lamp and Shade
- 72 A Crystal Decanter and Six Wine Glasses
- 73 A Magazine Rack
- 74 An Inlaid Box and its Contents
- 75 An 'Ashford Castle' Decanter and a Glass Jug Decanter
- 76 A Crystal Preserve Jar and a Crystal Vase
- 77 A Mahogany Tray Top, Coffee Table
- 78 An Oil Painting 'Craic' – Taylor Carson
- 79 A Nice Two Seater Shaped Front Settee
- 80 A Framed Oil 'Changing Pastures, Glendun' – Donal McNaughton
- 81 A Framed Oil 'Out to Grass' – Gregory Moore



- 82 A Pair of Pottery Dogs
- 83 An Edwardian Inlaid Mahogany Mantle Clock
- 84 A Small Still Life Picture
- 85 A Burr Walnut Fall Front Writing Bureau
- 86 A Tapestry Covered Mahogany Framed Stool
- 87 A Mahogany Coffee Table
- 88 A Mahogany Oval Wall Mirror
- 89 A Mahogany Wall Bracket and a Capidmonte Style Figurine
- 90 A Nest of Four Tables
- 91 A Table Lamp and Shade
- 92 A 'Price Brothers' Two Handled Flower Holder
- 93 A Reading Lamp and Shade
- 94 An Oak Fall Front Writing Bureau
- 95 A Nice Mahogany Snap Top Pedestal Table
- 96 A Sundry Lot, the Top Shelf of the Bureau
- 97 An Early Decorative Tea Set
- 98 A Sundry Lot, the Two Bottom Shelves of the Bureau
- 99 A Framed Oil 'Tossing Hay by the Loughshore' – Gregory Moore

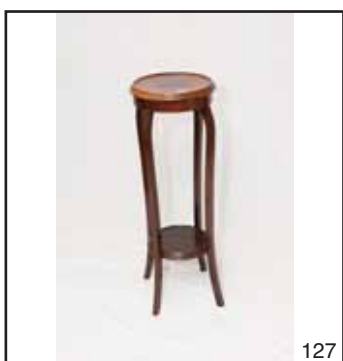
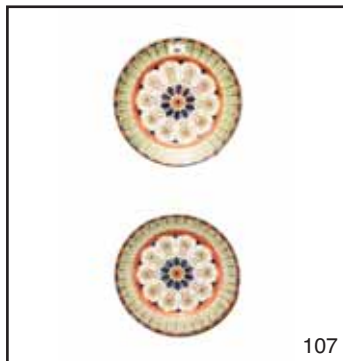
## Entrance Hall

- 100 A Mahogany Shield Back Hall Chair
- 101 A Lot of Three 'Cries of London' Pictures
- 102 A Framed Hall Mirror
- 103 An Oval Occasional Table, Centre Pedestal
- 104 A Brass Based Table Lamp and Shade
- 105 A Magnifying Glass
- 106 A Lot of Two Fine Framed Silhouette
- 107 An Unusual Pair of 'Cyprus' Circular Wall Plates
- 108 A Royal Winton Tall Vase
- 109 A Nice Black and White Framed Print
- 110 An Oak Granddaughter Clock
- 111 A Bentwood Hat and Coat Stand
- 112 A Victorian Silver Mounted Thorn Walking Stick, Birmingham 1892
- 113 A Fine Silver Topped Walking Cane, London 1920
- 114 A Silver Mounted Horn Handled Walking Stick, London 1919
- 115 An Unusual Oak Circular Stick Stand
- 116 A Lot of Sticks, Umbrellas etc
- 117 A Good Brass Blow Torch
- 118 A Brass Table Lamp and Shade
- 119 A Masons Ironstone Small Dish and a Circular Bowl
- 120 A Nice Shaped Side Walnut Occasional Table
- 121 A Nice Oak Hall Mirror
- 122 A Copper Wall Plaque and a Framed Print 'I Will Rise and Go To Innishfree'
- 123 A Pokerwork Spinning Chair

- 124 A Hanging 'Air Balloon' Feature
- 125 An Oval Mahogany Breakfast Table on Centre Pedestal
- 126 An Inlaid Jewellery Box
- 127 An Inlaid Plant Stand
- 128 A Table Lamp and Shade and a 'Tree Stump' Arrangement
- 129 A Nice Mahogany Framed Wall Mirror
- 130 An Inlaid Corner Chair
- 131 A Pottery Table Lamp and Shade
- 132 A Nice Carved Base Circular Plant Stand
- 133 A Watercolour 'Dunluce' – Fred Bottomley
- 134 A CD Player, Cassettes, Speakers and its Table
- 135 The Entire Wall Hangings of the Cloaks
- 136 Three Pieces of Modern Art Glass
- 137 A Nice Decorative Flower Holder, Silver Plated Rim
- 138 A Carltonware Hand Painted Bowl

## Dining Room

- 139 A Masons Ironstone Wall Plate
- 140 An Oil Painting 'Riverside Walk' – A Breslin
- 141 Four Pieces of Mason Ironstone Ware
- 142 Five Pieces of Mason Ironstone Ware
- 143 A Rosslyn China Tea Set
- 144 A Nice Baluster Style Table Lamp and Shade
- 145 A Nice Decorative Two Handled Dish, and Other Pieces
- 146 A Nice Framed Picture 'Farmyard Scene' – Tom Walsh
- 147 A Good Box of Linen
- 148 An Upholstered High Ended Window Seat
- 149 A Watercolour 'Garron Point' – Sam McLarnon
- 150 An Eight Piece Rosewood Dining Room Suite including Table, Six Chairs and a Four Door Sideboard (Two Extra Leaves)
- 151 A Sundry Lot of Two Pieces of Glassware, Two Glass Mugs etc
- 152 Three Pieces of Mason Ironstone Ware
- 153 An Inlaid Mahogany Two Handled Tray
- 154 A Good Sundry Lot
- 155 A Heavy Crystal Glass Fruit Bowl
- 156 A Heavy Cavan Crystal Vase
- 157 A Set of Mahogany Wall Shelves
- 158 A Lot of Four Geobel and Two Other Bird Figurines
- 159 A Porcelain Hat Pin Holder, Napkin Rings, Jugs etc (Two Shelves)
- 160 A Mahogany Three Shelf Dumb Waiter
- 161 A Prestige Coffee Maker and a Gilted Metal Table Lamp



- 162 A Sundry Lot of Mainly Easter Ornaments
- 163 A Coffee Maker, Napkin Rings, Plates, Table Protectors etc
- 164 A Sundry Lot of a Royal Doulton Tea Set, Candle Holders etc
- 165 A Nice Mirror Backed Sideboard, Carved Panel Doors
- 166 A Large Glazed Pottery Flower Pot Holder
- 167 A Sundry Lot including a Hummel Figurine 'Girl with Basket'
- 168 A Pair of Carved Wooden Bookends
- 169 A Pair of Crystal Napkin Rings and a Crystal Paperweight
- 170 Three Pieces of Crystal Glass
- 171 A Collection of Swarovski Glass Figurines
- 172 A Sadler Jug and a Sundry Lot of Ornaments
- 173 A Crystal Comport and Two Other Pieces of Crystal
- 174 A Japanese and another Wall Plate
- 175 A Nice Miniature Four Drawer Wellington Chest
- 176 A Pair of Inlaid Soapskin Lidded Boxes
- 177 A Tall Crystal Flower Vase
- 178 A Mahogany Drop Leaf Table
- 179 A Good Rectangular Carpet Square
- 180 A Large Gilt Framed Beveled Glass Wall Mirror
- 181 A Box of Christmas Decorations
- 182 A Masons Ironstone Dish
- 183 A Set of Six Crystal Brandy Glasses
- 184 A Fine Victorian Three Piece Silver Plated Tea Set
- 185 A Nice Mahogany Rectangular Table
- 186 An Upholstered Footstool, Tapestry Top
- 187 A Large Victorian Hand Painted Crown Pottery Jug
- 188 A Royal Worcester Jug
- 189 A Royal Worcester Dish
- 190 An Oil Painting 'Sunset at Dunluce' – William Cunningham
- 191 A Nice Inlaid Nest of Three Tables
- 192 A Pair of Table Lamps and Shades
- 193 A Beveled Glass Wall Mirror
- 194 An Aynsley Orchard Gold Circular Dish
- 195 A Very Fine Inlaid Table Canterbury
- 196 A Royal Doulton Figurine 'Summertime'
- 197 A Fine Large Charlotte Rhead Jug
- 198 A Mahogany Standard Lamp and Shade
- 199 A Pair of Oil Paintings 'Children Playing' – M Wilson
- 200 A Pair of Nice Upholstered Armchairs
- 201 A Nice Circular Mahogany Occasional Table
- 202 A Royal Winton Plant Holder and its Plant
- 203 A Set of Open Mahogany Bookshelves
- 204 A Royal Doulton Figurine on Stand 'Spirit of Peace'
- 205 A World Atlas and Other Books
- 206 A Berger Back Upholstered Open Armchair
- 207 A 3rd Period Belleek Jug
- 208 A 3rd Period Belleek Jug and Bowl
- 209 A Belleek Two Handled Bowl and a Similar Dish
- 210 A Nice Mahogany Occasional Table, Centre Pedestal
- 211 A Royal Worcester Pot Pourrie
- 212 A Wooden Handled Magnifying Glass
- 213 A Glass Topped Coffee Table
- 214 An Early Royal Doulton Plate 'The Justice's Late Meeting'
- 215 A Large Royal Doulton Character Jug 'Dick Turpin'
- 216 A Pottery and Silver Plated Lidded Biscuit Barrel
- 217 A Nicely Framed Coloured Golfing Print
- 218 A Very Good Shaped Front Two Seater Settee
- 219 An Oak Two Drawer Coffee Table
- 220 A 15 Piece 1950's Price Kensington Coffee Set
- 221 A Japanese Sword, Carved Ivory Handle and Sheath
- 222 A Magnificent Hand Painted Serves Plate Signed Collim, Made for the Royal Palace Chateau
- 223 A Good Rectangular Floor Rug
- 224 A Mahogany Occasional Table
- 225 A Victorian Mary Gregory Ruby Glass Tankard
- 226 Two Pottery Flower Pot Holders
- 227 A Nice Mahogany Open Bookshelf
- 227A A Nicely Bound Set of Twenty Volumes
- 228 An Antique Round Carved Oak Barometer
- 229 A Beswick Figurine of a Horse
- 230 A Beswick Figurine of a Lion
- 231 A Tall Pottery Flower Vase
- 232 A Circular Upholstered Foot Stool
- 233 A Folding Fire Screen and a Bowl and Contents
- 234 A Royal Doulton Figure 'Bo-Beep'
- 235 A Hummel Figurine 'Surprise'
- 236 A Royal Doulton Figure 'Helen'
- 237 An Edwardian Inlaid Mahogany Mantle Clock
- 238 A Lot of Three Russell Wilson Figurines of Birds
- 239 A Sundry Lot of Animal and Bird Figurines
- 240 An Oak Occasional Table
- 241 A Large Pottery Overpot
- 242 A Victorian Musical Symphonion and Two Spare Discs
- 243 A Royal Doulton Figurine 'Southern Belle'
- 244 A Hand Painted Pottery Jug and Contents
- 245 An Oak Three Shelf Dumb Waiter
- 246 A Set of Six Tall Crystal Wine Glasses
- 247 A Set of Six Crystal Sundae Dishes and Six Others
- 248 A Good Lot of Silver Plate Ware
- 249 A Lot of Four Limited Edition Collectors Plates
- 250 A Nice Mahogany Two Door Glazed Bookcase, Drawers Below
- 251 A Lladro Figurine 'Flower Picker'



- 252 A Lladro Figurine 'Boy with Flute'
- 253 A Lladro Figurine 'Angel Resting'
- 254 A Similar Figurine 'Children with Goose' and Another Figurine 'Dog with Ball'
- 255 A Large Solid Silver Photo Frame
- 256 A Three Piece Silver Plated Tea Service
- 257 A Large Silver Plated Coffee Pot
- 258 A Cased Set of Victorian Silver Apostle Tea Spoons, Tongs and Sifter Ladle, Birmingham 1897
- 259 A Silver and Glass Whiskey Noggin, Birmingham 1920
- 260 A Pair of Crystal Silver Mounted Knife Rests, Birmingham 1915
- 261 A Silver Ashtray, Birmingham 1949
- 262 A Silver Sauceboat, Sheffield 1932
- 263 A Silver Handled Shoe Horn and Button Hook, Birmingham 1910
- 264 A Georgian Irish Silver Rat's Tail Ladle, Dublin 1822, Maker James Scott
- 265 A Heavy George III Silver Soup Ladle, Edinburgh 1813
- 266 A Georgian Silver Marrow Scoop, London 1829, Maker John Henry and Charles Lias
- 267 A Victorian Silver Pepper Pot, London 1888
- 268 An Early Silver Snuff Box, Birmingham 1856, Maker Edward Smith
- 269 A Silver Patch Box, Birmingham 1912
- 270 A George III Silver Oval Vinaigrette, London 1797
- 271 An Unusual Demi-Lune Silver Snuff Box, Chester 1912
- 272 A Collection of Various Spoons
- 273 A Silver Handled Letter Opener
- 274 A Rare George III Scottish Silver Sugar Nips, probably Glasgow circa 1811
- 275 A George III Silver Caddy Spoon, London 1810, Maker William Eley
- 276 A Rare Dutch Silver Caddy Spoon, 1870
- 277 An Old Spectacle Case and a Lidded Box
- 278 A George III Silver Vinaigrette, Birmingham 1815
- 279 A Lot of Two Silver Medals
- 280 A Solid Silver Pocket Watch, Birmingham 1904, E Wise, Manchester
- 281 A Victorian Style 9ct Gold Garnet Ring
- 282 An 14ct Gold Diamond Set Ring
- 283 A Victorian Gold Garnet Dress Ring
- 284 A 9ct Gold Diamond Cluster Ring
- 285 A 9ct Gold Drop Earrings
- 286 A 9ct Gold Blue Sapphire and White Stone Earrings
- 287 A 9ct Gold Stone Pendant and Chain
- 288 Three Lots of Proof Coins

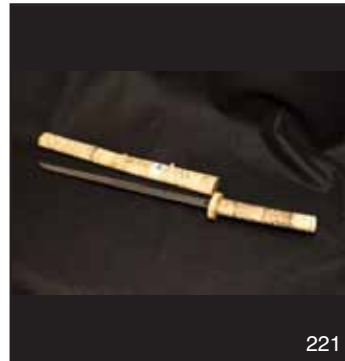
- 289 Three Lots of Proof Coins
- 290 A Heavy Silver Albert Chain with Silver and Gold Medal
- 291 A Royal Winton Carved 'Leaf' Dish and a Similar Preserve Jar
- 292 A Fine Antique Eight Piece Hand Painted Miniature Tea Set
- 293 A Collection of Crystal Glass
- 294 A Sundry Lot of Ornaments
- 295 A Framed Tapestry of Ireland and a Photograph of Dunluce Castle

## Utility Room

- 296 A Lot Of Two Gilt Framed 'Car' Pictures
- 297 A Hotpoint Washing Machine
- 298 A Creda Tumble Dryer
- 299 An Electric Frying Pan, Can Opener, Containers etc
- 300 A Glazed Earthenware Jug and Two Others
- 301 The Contents of the Two Shelves
- 302 A Lot of Four Framed Pictures, an Old Horn, and a Circular Hand Crafted Table Mat
- 303 A Copper and Brass Bucket
- 304 A Framed Picture after J H Craig
- 305 A Clothes Brush/Barometer and a Wooden Crafted Picture
- 306 A Clothes Horse, Linen Basket, Towels etc
- 307 An Art Glass Rise and Fall Light
- 308 A BT Pay Telephone

## Ground Floor Bedroom

- 309 A Good Two Door Wardrobe
- 310 A Slim Jim Pine Bookcase
- 311 A Collection of Good Hardback and Other Books
- 312 An Inlaid Mahogany Open Armchair
- 313 A Gilted Framed Wall Mirror
- 314 A Four Drawer Bedside Chest, and a Similar Larger One
- 315 A Good Illustrated Family Bible
- 316 A Metal Framed Double Bed, Duvet and Cushions
- 317 A Metal Based Table Lamp and Shade
- 318 A Patchwork Doll and Contents on Top of Chest
- 319 A Framed Picture and Another
- 320 A Mahogany Three Drawer Dressing Table
- 321 A Mahogany Open Armchair
- 322 A Collection of Teddy Bears
- 323 A Modern Mantle Clock



## Landing

- 324 A Mahogany Plant Stand, Twisted Column
- 325 A Framed Picture 'Cushendall' – Charles McAuley
- 326 An Oil Painting 'Home' – D Reid
- 327 An Oval Beveled Glass Wall Mirror
- 328 An Oil Painting 'Whiterocks' – O'Hara
- 329 An Old Country Rose Based Table Lamp and Shade
- 330 A Circular Mahogany Occasional Table
- 331 A Circular Gilt Framed Mirror
- 332 A Gilted Metal Table Lamp and a Two Handled Vase
- 333 A Very Fine Highly Carved Centre Table
- 334 A Berger Back Upholstered Open Armchair
- 335 A Nice Mahogany Chest of Five Drawers
- 336 A Brass Based Table Lamp and Shade
- 337 A Wooden Book Trough
- 338 A Large Figurine 'Lady with Lamb'
- 339 An Upholstered Armchair
- 340 Two Oil Paintings by D L Rodgers
- 341 A Gilted 'Cupid' Figurine
- 342 The Entire Contents of the Hot Press

## Bedroom 2

- 343 A Good Pine Three Door Wardrobe
- 344 A Pine Clothes Horse
- 345 A Good Lot of Tablecloths etc
- 346 An Oval Bamboo Mirror
- 347 A Pine 'Toy' Box
- 348 A Pine Table, Table Lamp and Alarm Radio
- 349 A Pair of Wooden Armchairs
- 350 A Good Pine Seven Drawer Chest
- 351 A Grundig Television and Its Bracket
- 352 A Collection of Dolls and Teddies
- 353 A Pair of Original Watercolours, Signed H.B.
- 354 A Pine Circular Wall Clock
- 355 A Circular Wooden Table and Its Contents
- 356 A Rectangular and Another Floor Rug

## Bathroom

- 357 A Gilt Framed Wall Mirror and a Framed Picture of a Scooner
- 358 An Oil Painting 'Boat on Windowsill' – A Michael
- 359 A Sundry Lot of Window Shelf
- 360 A Hardwood Carved Plant Stand, Marble Inset
- 361 A Mahogany Bedside Cabinet
- 362 A Large Copper Pot and its Plant and Two Bird Figurines
- 363 An Upholstered Chair

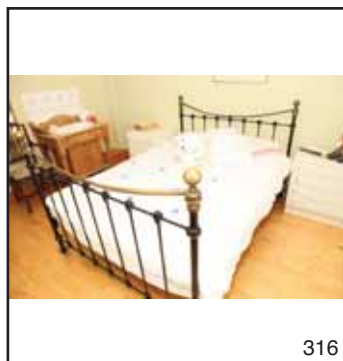
- 364 A Berger Seat Bathroom Chair
- 365 An Ornamental Boat etc
- 366 A Wall Mirror, Pottery Plate and a Picture
- 367 A Tall Vase, a Lidded Glass Jar, Bathroom Scales (Two Shelves)
- 368 A Bamboo Table and its Contents including a Jug and Basin Set

## Bedroom 3

- 369 A Mahogany Case Stand
- 370 An Inlaid Dressing Mirror
- 371 A Dressing Table and Stool with Triple Dressing Mirror
- 372 A Grundig Television and Its Bracket
- 373 An Early Inlaid Bar Back Chair
- 374 A Pair of Bamboo and Metal Framed Chairs (other in Bedroom 4)
- 375 A Mahogany Occasional Table
- 376 A Nice Pair of Original Watercolours – J W Coulter
- 377 A Lot of Linen
- 378 A Pair of Bedside Cabinets
- 379 A Pair of Brass Table Lamps and Shades
- 380 A Good Mahogany Headboard, Double Bed and its Linen
- 381 A Good Upholstered Armchair
- 382 A Mahogany Dressing Mirror on Stand
- 383 A Four Drawer 'Slim Jim' Chest of Drawers
- 384 A Pine Clothes Rail
- 385 The Framed Pictures and the Mirrors in the En-suite
- 386 An Oil Painting – J McNulty and a Wall Mirror
- 387 A Good Lot of Linen

## Bedroom 4

- 388 An Arched Top Upholstered Chair
- 389 A Nice 'Bird' Tapestry
- 390 A Kneehole Dressing Table
- 391 An Upholstered Stool
- 392 A Case Stand
- 393 A Framed Print after Hugh Thompson
- 394 A Grundig Television and Its Table
- 395 A Watercolour 'Water Bridge' – James McNulty
- 396 A Walnut Bedside Cabinet
- 397 A Pair of Table Lamps and Shades
- 398 A Set of Three Framed 'Still Life' Prints
- 399 A Large Upholstered Stool
- 400 An Upholstered Tub Chair
- 401 A Box of Linen
- 402 A Mahogany Wine Table



- 403 A Metal Based Table Lamp, Clothes Dolly and a Radio Alarm
- 404 A Wall Mirror Shelf and a 'Reverie de Soir' Mirror
- 405 A Wooden Towel Rail and a Bedroom Chair
- 406 An Oval Beveled Glass Mirror and a Pottery 'Fish' Plate

## Store Room

- 407 An Armchair and a Coffee Table
- 408 A Good Wooden Cot, High Chair and Childs Bath
- 409 A 'Jaffa' Fur Coat
- 410 A Fur Coat
- 411 A Three Fold Covered Screen
- 412 A Suitcase and Other Bags
- 413 A Three Drawer Chest and a Similar Dressing Table
- 414 A Good Lot of Toys
- 415 A Good Lot of Records
- 416 A Sundry Lot, Vase, Lamp etc
- 417 A Good Wicker Chair
- 418 A Four Drawer Mahogany Chest of Drawers
- 419 Two Table Lamps, Trays etc
- 420 An Electric Reclining Chair
- 421 A Good Pair of Framed 'Pears' Prints
- 422 A Standard Lamp and Shade
- 423 A Beveled Glass Circular Mirror and a Pottery Wall Plaque
- 424 A Large Gilt Framed Picture
- 425 A Good Bed Settee
- 426 A Table and its Contents, Books, Toys etc
- 427 A Large Pair of Speakers
- 428 A Large Patchwork Quilt and a Rectangular Floor Rug

## Garage

- 429 A Childs Bicycle, Mops, Brushes, Bucket etc
- 430 A Battery Charger, Lamp, Spirit Level and an Extension Lead
- 431 The Contents of Three Shelves, including Vice
- 432 A Socket Set
- 433 A Ten Drawer Tool Box and Its Contents
- 434 Two Cases of Tools
- 435 An 'Airmate' Compressor
- 436 A Gas Ring
- 437 A Qualcast Hedge Trimmer
- 438 Two Axle Stands
- 439 A Case Compressor
- 440 A Sun Lounger and a Large Parasol
- 441 Withdrawn
- 442 A Folding Sun Chair and Another Chair

- 443 A Cricket Set
- 444 A Bird Table
- 445 A Good Set of Pruners, Rake, Grubber etc
- 446 A Set of Aluminum Steps and a Smaller Set
- 447 A Case of Model Aircraft
- 448 A Hot Point Freezer
- 449 A Fertiliser Sower and a Strimmer
- 450 A Flymo Turbo Lite 330 Lawnmower
- 451 A Fire Extinguisher and a Hand Lamp
- 452 A Set of Jump Leads
- 453 A Super 180 Welder and Two Masks
- 454 The Contents of the Shelves
- 455 An Airmate Kit
- 456 A Lot of Flower Holders, Watering Can etc
- 457 A Two Ton Jack
- 458 A New Bar-b-que
- 459 The Contents of the Shelves
- 460 An Earthenware Jar, Compost etc
- 461 A Hoover Cleaner
- 462 A Lot of Two Motors, etc in Two Cases
- 463 A Set of Mixer Taps

## Outside

- 464 A Garden Bench
- 465 A Causeway Stone
- 466 A Good Wheelbarrow
- 467 An Oriental Wheelbarrow, Basket and a Lot of Filled Pots
- 468 Two White 'Sink' Flowerpots
- 469 A Sun Dial
- 470 The Pots around the Sun Dial
- 471 A Lot of Filled Pots
- 472 A Lot of Filled Pots



434



437



450



457





51 Main Street, Ballymoney BT53 6AN Tel: (028) 2766 7669