



Ballymoney

Important Sale by Auction of

Antique & General Furnishings



Inc. Two Longcase Clocks,
Vienna Clocks, Collectibles etc

**34 Newal Road,
Ballymoney**

(The collection of the above and another important property)

**Thursday 4th March
Commencing 7.00pm**

Viewing: Monday 1st March 7.00 – 8.30pm, Tuesday 2nd
and Wednesday 3rd 3.00 – 5.00pm and 7.00 – 8.30pm
and day of sale from 4.00pm

Sale to be held by Catalogue and Screen at
'The Auction Rooms' Main Street, Ballymoney
commencing 7.00pm

Telephone Number During Viewing & Sale
028 276 67669

Conditions

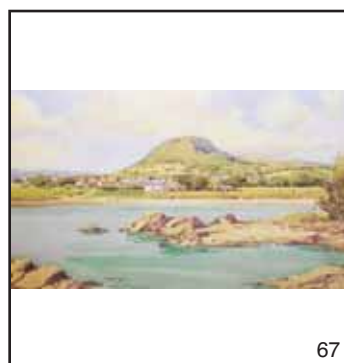
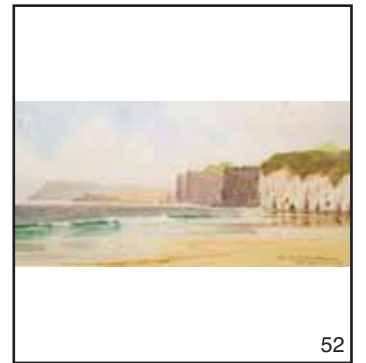
1. The highest approved bidder shall be the purchaser. The Auctioneer reserves the right to refuse any bid, and should any dispute arise between two or more bidders, the lot or lots in dispute shall be put up again, or not, and resold at the discretion of the Auctioneer, or the auctioneer may declare the purchaser. The Auctioneer reserves the right to alter, divide, group or withdraw any lot or lots either before or at any time during the sale.
2. The Auctioneer shall regulate the bidding and no bid shall be retracted.
3. Every purchaser shall give his name and place of abode, in default of which the Auctioneers shall have the power to resell at once, or afterwards as they may think fit.
4. Each bidder shall be supposed to have seen and to be thoroughly acquainted with the contents and conditions of the lot or lots on which he may bid, and no allowance whatsoever will be made for any faults, imperfections or errors of any description. The measurements and quantities described in the Catalogue are believed to be correct and must be taken as such. The purchaser being held to have satisfied himself as to measurements and quantities and other specifications in the Catalogue before bidding, neither will the Auctioneers or the Vendors be responsible for any lot or parts of any lot after the fall of the hammer, from which time all lots purchased are at the risk of the Purchaser.
5. The Auctioneers or the Vendors do not guarantee the measurements catalogued, or the correct description, genuineness or authenticity of any lot.
6. Each purchaser shall pay the whole amount of his purchase money (Auctioneer's Commission payable by purchaser) for all lots bought by him before any lot or lots can be removed and the whole amount due from each purchaser must be absolutely paid on each day of the sale and if not paid within such time, all moneys deposited in any part payment shall be absolutely forfeited and the Auctioneers will be at liberty to resell the lot or lots or any parts thereof remaining un-removed, by Public Sale or otherwise, without giving previous notice to the purchaser and any difference or deficiencies which may arise from, such re-sale, together with all expenses attending the same shall be made good by the purchaser.
7. The lots are sold with all faults and errors of description. No allowance can be made in any case, nor will the Vendors be answerable for any deficiencies in quantities or measurements when the purchaser, his agent, carrier or man employed by him has removed any part of his lot or lots from the premises. All lots purchased must be removed absolutely in the time specified and if not so removed may be resold by the Vendors.
8. The Purchaser shall be answerable for all damages occasioned by any injury or other lots, by the removal of lots purchased by them, or to the premises and to repair or pay damages to the owners of same before the removal of their lots from the premises. In the event of any persons interested in the premises, claiming the whole or any part of a lot before its removal therefrom or if in the Auctioneer's opinion, the removal of any lot will endanger or permanently damage any building, the Auctioneer may, by written notice to the purchaser of such lot delivered to him or his Agent, or sent by post to his abode or place of business last known to the Auctioneers, rescind the sale of any such lot. The purchaser shall then be repaid his purchase money but shall not have or make any other claim.
9. Such lot or lots as are not cleared away agreeably to the condition of this sale, will not only be forfeited and may be dealt with under last condition, but the purchaser shall pay every expense attending the removal of any such lot or lots, and the costs of making good any damage occasioned by such removal. No lots shall be removed until the day following the last day of sale.
10. If any dispute or difference arises about any lot, or any other subject, the same shall be settled by the Auctioneers, with the approval of the Vendors, whose determination shall be final and binding on all parties concerned.
11. The Auctioneers nor the Vendors do not accept any liability for personal injuries of any description sustained or caused by any reason whatsoever by any person while on the premises or otherwise.
12. Purchasers will pay 12.5% Auctioneers Commission (minimum fee £1) + VAT on the commission.

Auctioneers Note:

Special attention is drawn to this sale as it represents an interesting collection of quality furnishings and collectibles from two important clearances.

Nice furnishings, good clocks and collectible pieces of porcelain, glass, silver and jewellery, which are included in this sale which should appeal to the discerning, who will appreciate the quality contained therein.





Kitchen

- 1 A Sundry Lot of an Old Pottery Jug, Decanter and Royal Worcester 'Evesham Dish etc
- 2 A Good Lot of Silver Plate and Bone Handled Knives
- 3 A Lot of Six Kidney Shaped Wedgwood Side Dishes
- 4 An Old English Pottery Tea Set, 37 Pieces
- 5 A Hinari Lifestyle Microwave
- 6 A 'Boch' Belgium Pottery Coffee Set
- 7 A Good Lot of Silver Plated Cutlery, Serving Spoons etc
- 8 A Sundry Lot of a Coffee Percolator, Heated Tray, Silver Plate etc
- 9 Two Electric Kettles
- 10 A Part Burleigh Ware Hand Painted Dinner Set
- 11 A Preserving Pan, Pressure Cooker and Some Saucepans
- 12 A 'Blackspur' Electric Room Heater
- 13 A Burleigh Ware Par Dinner Service
- 14 A Sundry Lot of a Crown Devon Lidded Tea Jar, Amber Glass and Other Pieces
- 15 A Good Boxed Lot of China Mugs, Pyrex ware etc
- 16 A Pair of Gilt Framed Pictures 'Still Life' after A Williams

Sun Porch

- 17 A Large Blue Glazed Pottery Tall Jug
- 18 A Sundry Lot of a Denby Bowl, Glass Bowls etc
- 19 A Haier Small Freezer
- 20 A Singer Sewing Machine on Stand
- 21 A Small Banjo Style Barometer
- 22 A Pottery Figurine of a 'Girl on the Rocks'
- 23 A Large Sundry Lot of Crystal Jugs, Sundae Dishes, Drinking Glasses etc
- 24 A Pair of Green Patio Chairs
- 25 An Old Lidded Covered Dish
- 26 An Unusual Telescopic Brass Table Lamp and Shade
- 27 A Part Crown Goldendale 'Hedgerow' Dinner Set
- 28 A Sundry Lot of Plant Holders and Their Contents
- 29 A Small Formica Top Table and a Circular Solid Wood Stool
- 30 A Mirror Backed Mahogany Hall Stand
- 31 A Brass Handled Walking Cane with Watch Inset
- 32 An Unusual Bone Handled and Cork Stem Walking Cane
- 33 A Lot of Two Walking Canes
- 34 A Set of Field Glasses in their Carrying Case

Cloaks

- 35 An Early Cast Metal Boot Scraper
- 36 A Mahogany Shield Back Hall Chair
- 37 A Morphy Richards Steam Iron
- 38 A Large Jardinière on Stand
- 39 A Collection of Coronation Ware
- 40 A Walnut Oval Coffee Table on Queen Anne Legs
- 41 An Old Set of Scales and Weights
- 42 An Unusual Miniature Spinning Wheel
- 43 A Small Shield Back Clothes Brush and an Old Pair of Tailor's Scissors
- 44 A Pair of Bentwood Chairs and Their Contents
- 45 A Small Framed Stage Coach Print j- Anton Pieck

- 46 An Old Gilt Framed Oil Painting 'Fisherman' and an Oak Framed Photograph
- 47 An Early Clothes Dolly

Entrance Hall, Stairs and Landing

- 48 A Small Mahogany Hand Painted Firescreen
- 49 A Tiffany Glass Table Lamp
- 50 A Nice Bevelled Glass Pokerwork Wall Mirror
- 51 A Water Colour 'Fairhead' - R Faulkner
- 52 A Water Colour 'Whiterocks, Portrush' G W Morrison
- 53 A Sundry Lot of a Bust of Beethoven, Chinese Carved Figurine, Crown Devon Floral Arrangement, etc
- 54 A Noritake Hand Painted Two Handled Dish
- 55 A Noritake Hand Painted Lidded Trinket Box
- 56 A Mantle Clock with Revolving Pendulum, Under Dome
- 57 A Demi Lune Hall table, Centre Drawers, Queen Anne Legs
- 58 A Mahogany Stool, Queen Anne Legs, Tapestry Stool
- 59 A Heavily Carved Oak Hall Chair
- 60 A Superb Mahogany Long Case Clock, Brass Arch Top Dial, William Barr, Paisley
- 61 A Carved Hardwood Demi-lune Hall Table, Granite Inset
- 62 A Bronze Figurine of two Whippets
- 63 A 'Dog Head' Shoe Horn
- 64 A Falcon China Plate 'Ballymoney, Co Antrim' and a Small Thermometer
- 65 A Superb Inlaid Mahogany Banjo Style Barometer
- 66 A Pair of Water Colours ' Ballycastle Harbour' and 'Coast Towards Mussenden' - Alymer Armstrong
- 67 A Gilt Framed Picture 'Waterfoot' Sam McLarnon
- 68 A Pair of Water Colours 'Antrim Coastal Scenes' W H Burns
- 69 A Large Carved Framed Hall Mirror
- 70 A Carved Back Walnut Framed Upholstered Single Chair
- 71 An Unusual Carved Wooden Musical Instrument
- 72 A Small Set of Scales
- 73 A Bound Volume of Fading Memories by Robert Anderson
- 74 A Pair of Beswick 'Pheasant Dishes'
- 75 A Royal Doulton Figurine of a Boxer
- 76 A Beswick Figurine of a Foal and Another
- 77 A Beswick Figurine of a Robin and a Wren
- 78 A Royal Doulton Figurine of a Kitten
- 79 A Beswick Figurine of a Grey Wagtail and a Blue Tit
- 80 An Inlaid Mahogany Two Drawer Small Unit, Gallery Top
- 81 An Unusual Black and White Engraving of a Stained Glass Window
- 82 A Mahogany Wall Shelf
- 83 A Small Lloyd Loom Bedside Locker
- 84 A Mahogany Piano Stool, Tapering Legs
- 85 A Good Mahogany Double Weight Vienna Wall Clock, Gustav Becker Movement
- 86 A Mahogany Six Drawer Music Cabinet



87



89



90



91 - 98A



99



100 (Suite)



106



109



110



112



113



117



118, 119 & 121



120



122



123 & 124



125 & 126



126 (Set Of 6)



127



130 - 133

Dining

- 87 A Lot of Three Pieces of Carlton ware, Royal Winton Leaf Dish and a Wedgwood Trinket Box
- 88 A Silver Plated Double Sided Picture Frame
- 89 An Unusual Shaped Crystal Vase and a Fruit Bowl
- 90 A Brass Corinthian Pillar Parlour Lamp, Hand Painted Pink Bowl and Etched Glass Pink Shade
- 91 A Royal Doulton Figurine 'The Little Pig' HN1793
- 92 A Royal Doulton Figurine 'Valerie' HN1952
- 93 A Royal Doulton Figurine 'Dinky Doo' HN1673
- 94 A Royal Doulton Figurine 'Babie' HN1679
- 95 A Royal Doulton Figurine 'Time for Bed' HN3762
- 96 A Royal Doulton Figurine 'Emma' HN3206
- 97 A Royal Doulton Figurine 'The Old Balloon Seller' HN2129
- 98 A Coalport Figurine 'Kimberley'
- 98A A Small Mahogany Display Stand
- 99 An Oil Painting signed - Rainey
- 100 A Nice Oak Drop Leaf Dining Room Table and Four Matching Chair Set
- 101 A Nice Oak Tow Door Sideboard, Two Top Drawers
- 102 A Large Oval Blue and White Dish and an Aynsley Sandwich Tray
- 103 A Royal Worcester Rectangular Dish in its Presentation Box, To Celebrate the Millennium
- 104 A Good Lot of Silver and Silver Plated Cutlery Mainly in their Presentation Boxes
- 105 A Good Collection of Souvenir Spoons
- 106 An Oak and Leaded Glass Two Door Book Cabinet
- 107 The Entire Contents of the Book Cabinet
- 108 A Royal Doulton Six Piece Dessert Set
- 109 A Lot of Five Pieces of Lustre Ware
- 110 An Oil Painting 'Sheep Grazing' Liam Reilly
- 111 A Limited Edition Plate From the Painting 'Evening in Achill' by Percy French
- 112 Two Pieces of Belleek and Another of Donegal China
- 113 A Mahogany Folding Cake Stand
- 114 A Pine Framed Print 'Still Life' after Vincent Van Gogh
- 115 A Carved Mahogany Standard Lamp
- 115AA Brass Twin Branch Table Lamp
- 116 A Toshiba Remote Control Television on Stand
- 117 A Royal Doulton Tea, Coffee and Dinner Service 'Sonnet' Pattern
- 118 A Noritake Hand Painted Unusual Shaped Vase
- 119 A Noritake Hand Painted Two Handled Vase
- 120 A Superb Tall Brass Corinthian Pillar Oil Lamp, Cut Glass Bowl and Hand Painted Etched Shade
- 121 A Hand Painted Noritake Two Handled Dish
- 122 A Mahogany Easy Chair, Shaped Front, Tapestry Seat
- 123 A Mahogany Magazine/Book Trough
- 124 A Set of Sixteen Bound Volumes of Charles Dickens Novels
- 125 A Superb Rosewood Circular Breakfast Table on Ornate Carved Centre Pedestal
- 126 A Fine Set of Six Rosewood Framed Upholstered Dining Room Chairs
- 127 A Nice Bevelled Glass Pokerwork Wall Mirror
- 128 A Pair of Ruby Glass Hand Painted Tall Vases
- 129 A Pair of Green Glass Mary Gregory Tall Vases
- 130 A Tall Ruby Glass Vase
- 131 An Unusual Shaped Ruby Glass Vase
- 132 A Ruby Glass Decanter and Stopper

- 133 A Ruby Glass Finger Bowl
- 134 Five Pieces of Aynsley 'Cottage Garden' Bone China
- 135 A Hand Painted Noritake Circular Two Handled Bowl
- 136 A Hand Painted Noritake Finger Bowl
- 137 A Melba Ware Pottery Figurine of a Cat
- 138 A Set of Six Waterford Stemmed Drinking Glasses
- 139 A Set of Six Crystal Drinking Glasses
- 140 An Oil Painting 'Milking Time' - Liam Reilly
- 141 A Pair of Tyrone Crystal Vases
- 142 A Waterford Crystal Preserve Jar and a Crystal Jug and Sugar
- 143 A Lot of Four Pieces of Crystal Ware
- 144 A Large Waterford Glass Fruit Bowl
- 145 A Tyrone Crystal Comport and Three Other Small Pieces of Crystal Glass
- 146 A Sundry Lot of Two Silver Plated and Crystal Condiments and a Lidded Preserve Jar
- 147 A Large Crystal Vase and Five Pieces of Hand Painted and Overlay Glassware
- 148 A Small Mahogany Wine Table on Centre Pedestal
- 149 A Small Drop Side Oak Oval Table
- 150 A Superb Walnut and Brass Bound Dressing Case with Silver Topped Crystal Bottles, London 1854

Drawing Room

- 151 A Nicely Bound Volume 'Coronation Souvenir Book 1937' and a 1965 Friendship Book
- 152 A Magnifying Glass
- 153 A Large Masons Ironstone Lidded Ginger Jar, 'Chartreuse' Pattern
- 154 A Collection of Five Pieces of Aynsley 'Cottage Garden' Pieces
- 155 A Good Inlaid Mahogany Single Pedestal Writing Desk
- 156 An Inlaid Mahogany Small Chair, Upholstered Seat
- 157 A Large Pottery Table Lamp and Shade and a Similar Vase
- 158 A Three Piece Drawing Room Suite
- 159 A Thomson Remote Control Television and a Digital Receiver
- 160 An Inlaid Walnut Bureau Cabinet, Shaped Front Fitted Interior
- 161 A Burr Walnut Fall Front Coal Scuttle
- 162 A Royal Doulton Figurine of a Yorkshire Terrier
- 163 A Royal Doulton Figurine of a Jack Russell
- 164 A Royal Doulton Figurine of a Siamese Cat
- 165 A Royal Doulton Figurine of a British Shorthair Cat
- 166 A Tapestry Firescreen/Table
- 167 A Hand Painted Burleigh Ware Jug and Another Hand Painted Jug
- 168 A Royal Doulton Mask Jug 'Falstaff'
- 168A Two Smaller Royal Doulton Mask Jugs 'The Poacher' and Another
- 169 An Inlaid Drop Side Small Table
- 170 A Nice Metal Framed Carved Wall Mirror
- 171 An Unusual Pair of Solid Brass Candlesticks
- 172 A Pair of Royal Doulton Bunnykins Figurines 'Groom Bunnykins' and 'Boy Skater'
- 173 A Pair of Royal Doulton Bunnykins Figurine 'Gardener Bunnykins' and 'Bathtime Bunnykins'
- 174 A Goebel Figurine of a Rabbit and a Small Figurine of a Seated Horse
- 175 An Unusual Silver Plated Mantel Clock, Twisted Column



- 176 A Royal Worcester 'Parakeet' modelled by F G Doughety
- 177 A Mahogany Framed Stool, Queen Anne Legs, Tapestry Seat
- 178 A Baluster Pottery Based Table Lamp and Its Shade
- 179 A Mahogany Lift Top Small Table
- 180 A Pair of Ruby Glass Peg Lamps and Their Shades
- 181 A Small Pair of Gilt Framed Hand Painted Plaques, Signed
- 182 An Unusual Limited Edition Royal Doulton Figurine 'Hope' HN3061
- 183 A Royal Doulton Figurine 'My Best Friend' HN3011
- 184 A Royal Doulton Figurine 'Blithe Morning' HN2065
- 185 A Royal Doulton Figurine 'Top of the Hill' HN1834
- 186 A Royal Doulton Figurine 'The Bridesmaid' HN2196
- 187 A Royal Doulton Figurine 'Janine' HN2461
- 188 A Royal Worcester Figurine 'Grandmothers Dress'
- 189 A Royal Worcester Figurine 'First Dance'
- 190 A Coalport Figurine 'Beverley'
- 191 A Coalport Figurine 'Diane'
- 192 A Royal Worcester Figurine 'Monday's Child is Fair of Face'
- 193 A Mahogany Five Shelf Open Whatnot
- 194 A Large Silver Plated Circular Tray
- 195 A Large Silver Plated Biscuit Barrel
- 196 A Brass Telescopic Standard Oil Lamp
- 197 A 3rd Period Belleek Water Pail
- 197AA 2nd Period Belleek Three Legged Pot
- 198 A Small Mahogany Occasional Table, Queen Anne Legs
- 199 A Parker Knoll Upholstered Armchair
- 200 A Good Mahogany Long Case Clock, Painted Arch Dial, John Hay, Calton Glasgow
- 201 A Tall Pair of Noritake Hand Painted Vases
- 202 A Tall Pair of Noritake Two Handled Hand Painted Vases
- 203 A Pair of Two Handled Hand Painted Noritake Vases
- 204 A Pair of Two Handled Hand Painted Noritake Vases
- 205 A Superb Royal Worcester Hand Painted Oil Lamp
- 206 A Royal Worcester Hand Painted Oil Lamp
- 207 A Royal Worcester Hand Painted Jug
- 208 A Royal Worcester Hand Painted Jug
- 209 A Royal Worcester Hand Painted Pot Pourri
- 210 A Royal Worcester Hand Painted Small Vase
- 211 A Royal Worcester Hand Painted Jug
- 212 An Unusual Royal Doulton 'Hunting' Mug
- 213 A Royal Dux Figurine of a Gentleman
- 214 A Royal Dux Figurine of a Lady with Harp
- 215 A Royal Dux Figurine 'Arabian Knight with Horse and Falcon'
- 216 A Royal Dux Figurine 'Shepherd'
- 217 An Oak Two Door Mirror Backed Arts and Crafts Style Sideboard
- 218 A Border Fine Arts Figurine 'Stand off'
- 219 A Border Fine Arts Figurine 'The Last Laugh'
- 220 A Superb Inlaid Music Box
- 221 A Lot of Two Caithness Glass Small Vases
- 222 A Hummel Figurine 'Boy With Basket'
- 223 A Hummel Figurine 'Boy with School Bag'
- 224 A Hummel Figurine 'Happiness'
- 225 A Large Limited Edition Hummel Group 'Troublemaker'
- 226 A Large Crystal and Silver Plated Claret Jug
- 227 A Mahogany Fall Front Writing Bureau, Fitted Interior

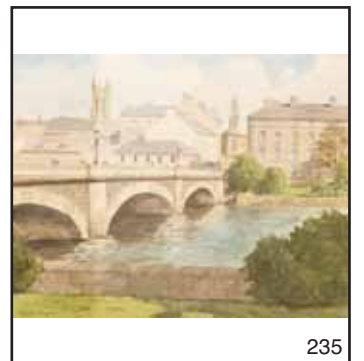
- 228 A Nice Original Oil Painting in Gilt Frame 'Spotted' J Jason
- 229 An Oil Painting 'Grazing in the Shade' Liam Reilly
- 230 A Superb Large Vienna Wall Clock with Fitted Barometer and Thermometer
- 231 A Large Chinese Floor Rug

Bedroom 1

- 232 A Parker Knoll Upholstered Easy Chair
- 233 An Octagonal Decorated Small Table
- 234 A Mahogany Framed Upholstered Piano Stool with Music Drawer
- 235 A Water Colour 'Bann Bridge' Gerald Maguire
- 236 An Old Gilt Framed Coloured Print
- 237 A Large Box of Records
- 238 A Heavy Gilt Framed Oil Painting after Alan Ardiel
- 239 A Nice Oval Bevelled Glass Carved Framed and Hand Painted Wall Mirror
- 240 A Four Piece Mahogany Bedroom Suite including Bed and Mattress
- 241 A Fox Fur Stole
- 242 A Violin in Case
- 243 A Wool Blanket
- 244 A Good Lot of Linen
- 245 A Brass Based Table Lamp and Shade
- 246 An Unusual Framed Water Colour and Feather Picture
- 247 A Brass Oil Lamp
- 248 A Royal Worcester Collectors Plate 'Waiting for Santa'
- 249 A Lloyd Loom Chair and Lidded Automan
- 250 A Lloyd Loom Bedside Cabinet
- 251 A Crown Portable Remote Control Television
- 252 A Water Colour 'Portstewart' Gerald Maguire
- 253 A Heavy Carved Oak Side Table, Centre Drawer

Bedroom 2

- 254 A Small Two Drawer Footstool
- 255 A Superb Pair of Mahogany Single Beds with new Mattress
- 256 A Corby 5000 Trouser Press
- 257 A Small Circular Tapestry Top Small table and an Upholstered Footstool
- 258 An Old Victorian Oil Painting in Heavy Gilt Frame 'Shady Spot' G Cullens
- 259 A Three Piece Walnut Bedroom Suite
- 260 A Good Pair of Heavy Polished Brass Table Lamps and Shades
- 261 A Lot of Linen
- 262 A Large Box of Wooden Hangers
- 263 A Set of Gustav Becker Vienna Clockworks
- 264 A Sundry Lot of a Table Lamp and Shade, Jewellery Box etc
- 265 A Large Early Oil Painting 'Heading Home' Charles McAuley
- 266 A Mink Fur Coat
- 267 A Muskrat Fur
- 268 A Fur Coat
- 269 A Large Box of Music and Music Books
- 270 A Large Upholstered Stool
- 270AA Carved Back Upholstered Bedroom Chair
- 271 A Lloyd Loom Chair
- 272 A Mahogany Framed Oval Bevelled Glass Wall Mirror



- 273 A Lot of Crystal Decanters
- 274 An Old Radio
- 275 An Oak Small Table, Barley Twist Legs
- 275AA Pair of Plates

Bedroom 3

- 276 An Unusual Inlaid Top Occasional Table
- 277 A Mahogany Dressing Mirror on Stand
- 278 An Oil Painting 'Mountain Grazing' Tom Stephenson
- 279 A Framed Picture 'Portrush Harbour' Sam McLarnon
- 280 A Small Oak Chest of Four Drawers
- 281 A 31 Day Wall Clock
- 282 A Sundry Lot of a Table Lamp and Shade, Circular Plaque etc
- 283 An Arch Top Wall Mirror and a Small Lidded Automan
- 284 A Lloyd Loom Chair
- 285 A Sundry Lot of a Wooden Carved Pillow, a Three Piece Pokerwork Dressing Table Set etc
- 286 A Mahogany Framed Button Top Footstool
- 287 A Small Oak Cord Box
- 288 A Good Box of Linen
- 289 A Jug and Basin Set
- 290 A Mahogany Corner Mirror Back Hanging Bracket
- 291 A Tapestry Top Mahogany Stool
- 292 An Inlaid Mahogany Two Drawer Blanket Chest, Upholstered Top
- 293 A Pair of Gilt Framed Watercolours 'Landscapes' – G Trevor
- 293AA Pair of Figurine Table Lamps
- 294 An 18ct Gold Ruby and Pearl Ring, Birmingham 1905
- 295 A 9ct Rose Gold Sapphire and Pearl Ring, Birmingham 1923
- 296 An 18ct Gold Ring
- 297 A 9ct Gold Signet Ring
- 298 Act Gold Plait Ring
- 299 A 9ct Gold Ring set with a Smokey Citrine
- 300 A 9ct Masonic Ball
- 301 A Fine Silver Mizpah Brooch, Birmingham 1902
- 302 A Victorian 9ct Gold Neck Chain
- 303 A Victorian 9ct Rose Gold Curb Bracelet
- 304 A Superb Victorian 9ct Gold Guard Chain (34.4 grams)
- 305 A 9ct Gold Rose Bangle, Birmingham 1908
- 306 An 18ct Gold Diamond Set Necklace
- 307 A Victorian 14ct Gold Gents Pocket Watch
- 307ATwo League of Pity Badges and Three Others
- 308 A Victorian Enamel Quizzing Glass
- 309 A 9ct Gold Cigar Cutter, London 1936
- 310 An Unusual Silver Chess Piece, Birmingham 1903
- 311 A Pair of George III Silver Bright Cut Sugar Tongs, London Circa 1810 maker John Crouch
- 312 A Superb Silver and Enamel Buckle, Birmingham 1910
- 313 A Rare Scottish Provincial Spoon, Perth c1810, maker R & R Keay
- 314 A Pair of George III Silver Sugar Nips, London C 1775, maker Abraham Barrier
- 315 An Unusual George III Snuff Box, Birmingham 1796, maker Samuel Pemberton
- 316 A Very Fine Silver and Tortoise Shell Snuff Box, Birmingham 1910
- 317 A Solid Silver Sovereign Case, Birmingham 1910
- 318 A Superb Victorian Silver and Ivory Letter

- Opener/Page Turner, Birmingham 1898
- 319 An Embossed Silver Jewel Box Birmingham 1903
- 320 A Fine Heavy Silver Hip Flask, London 1940
- 321 A Large Silver Crucifix, London 1903
- 322 A Superb Heavy Cast Silver Sauce Boat, Birmingham 1904
- 323 A Fine Pair of Heavy Silver Tazzas, Sheffield 1932

Garage

- 324 A Wooden Clothes Horse
- 325 A Set of Metal Steps
- 326 A Wooden Lidded Trunk
- 327 Two Surf Boards
- 328 A Belfast Sink
- 329 An Old Lidded Butter Box and a Mop Bucket
- 330 A Pair of Garden Planters
- 331 A Pair of Cast Iron Garden Seats
- 332 A Pair of Cast Iron Garden Urns on Stands



259 (Suite)



265



266



276



277



280



307



308 & 309



310, 312 & 316



311, 313 & 314



318 - 320



322



323

Next Auction



Lorna Millar - Oil



Frank Egginton - Watercolour

Viewing: Tuesday 9th March at 'The Everglades Hotel', Prehen
3.00 - 8.30pm and day of sale from 3.00pm

Annual Sale of 'Irish Art'

The Everglades Hotel, Prehen, Londonderry

Wednesday 10th March commencing 7.30pm

Sales includes works by Markey Robinson, Frank Egginton, Arthur Twells, George Morrison, Charles McAuley, Brian Ballard, Lorna Millar, Martin Hasson, Carrie O'Duinn, Tom Quinn, Fran Fit, Desmond Kinney, Maurice C Wilks, Noel Shaw, Liam Reilly, Des Murrie, James McKendry, Marie Carroll, Hugh McIlfratrick, David Gordon Hughes, Gerry Glynn, Sam McLarnon, Manvel Escalona, J W Carey, J P Rooney, Desmond Monroe, Donald McNaughton, William Cunningham, Michelle Carlin etc.

