

M ountsandel M ews - 80 M ountsandel R oad



Site maps and photographs for illustrative purposes only

M ountsandel M ews



COLERAINE



Coleraine Office
 20 New Row
 Coleraine BT52 1AF
 T : 028 7034 2224

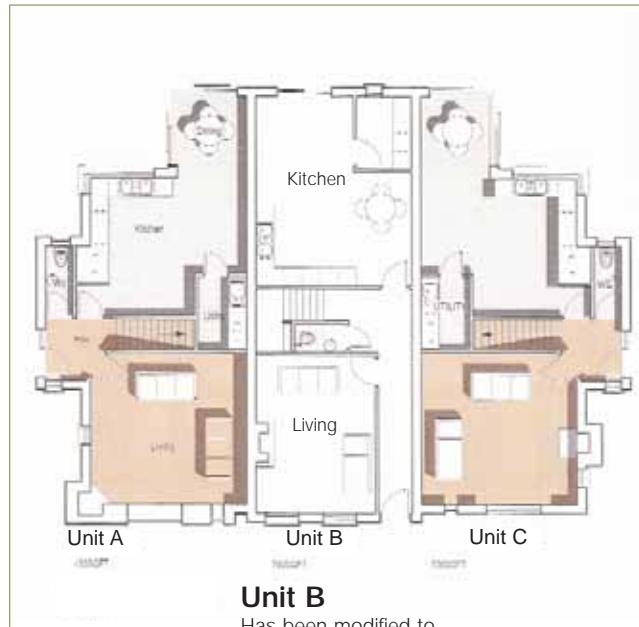
www.mcafeepropertiesandmortgages.com

www.mcafeepropertiesandmortgages.com

Antrim Office T : 028 9440 2744	Ballycastle Office T : 028 2678 9404	Ballymena Office T : 028 2663 7733	Ballymoney Office T : 028 2700 7070	Coleraine Office T : 028 7034 2224	Portrush Office T : 028 7052 1111	Portstewart Office T : 028 7063 2233	Commercial T : 028 7063 6222 / 028 2663 7733
---	--	--	---	--	---	--	--

Mcafee Properties and Mortgages is an appointed representative of Legal & General Partnership Services Limited for advising on and arranging mortgages and insurance and an introducer appointed representative of the following companies for introducing the products shown: Legal & General Assurance Society Limited (life insurance, pensions and investments), Legal & General (UK) Trust Managers, Limited and Legal & General (Portfolio Management Services) Limited (investments). All these Legal & General subsidiary companies are authorised and regulated by the Financial Services Authority.
 Partners: Gerard McAfee and Mark Pollock
 Approval No: N77782

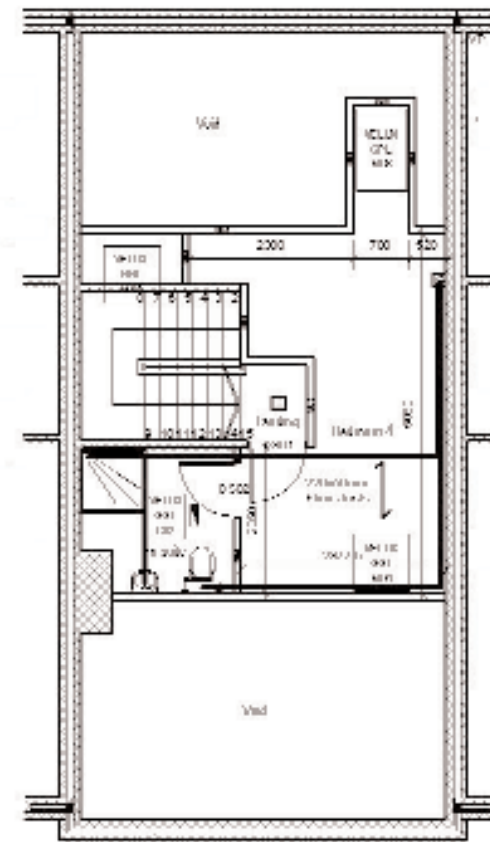
L imited R elease of 3 L uxury T ownhouses



Unit B
Has been modified to give a floored loft area



First Floor Plan
5066 1101



Unit B



GROUND & FIRST FLOOR PLANS



UNIT A

SECOND FLOOR PLAN

Room Sizes

Units A & C

Ground Floor		
Living	5.1 x 5.0m	16'10" x 16'6"
Kitchen	5.1 x 4.9m (max)	16'10" x 14'10"
Dining	2.9 x 2.2m	9'6" x 7'3"
Utility	2.4 x 1.6m	7'10" x 5'3"
First Floor		
Master Bedroom	3.5 x 3.4m	11'6" x 11'3"
Bedroom 2	3.9 x 2.7m	12'10" x 8'10"
Bedroom 3	5.0 x 2.1m	16'6" x 6'10"

Unit B

Ground Floor		
Living	5.2 x 3.9m	17'1" x 12'10"
Kitchen	5.1 x 3.7m	16'10" x 12'3"
Dining	3.2 x 2.5m	10'6" x 8'3"
Utility	2.4 x 1.6m	7'10" x 5'10"
First Floor		
Master Bedroom	4.0 x 3.5m	13'3" x 11'6"
Bedroom 2	4.1 x 2.8m (max)	13'6" x 9'3"
Bedroom 3	4.1 x 2.2m (max)	13'6" x 7'3"
Second Floor		
Floored Loft Area	5.0 x 2.86 (max)	16'6" x 9'5"
	2.65 x 2.1 (max)	8'9" x 6'10"

(irregular shape)
B.C. 07.09.07 B.C. 17.10.07



UNIT A

